

**RENEWABLES** – Southern Company, the premier energy provider to the U.S. Southeast, supports the development and use of cost-effective renewable energy sources. We are taking action to increase the role of renewables in the generation of electricity, consistent with the availability of resources that ensure a continued supply of reliable and affordable energy.

A wide range of renewable sources and approaches are being pursued, including new biomass, solar and landfill gas generation plants. New partnerships with power producers are adding to the renewable energy options available to customers. Over 20 research and development projects are under way to determine the potential of different renewable resources and technologies. And Southern Company is among the largest U.S. generators of hydroelectric power, one of the cleanest, most environmentally safe and affordable sources of renewable energy.

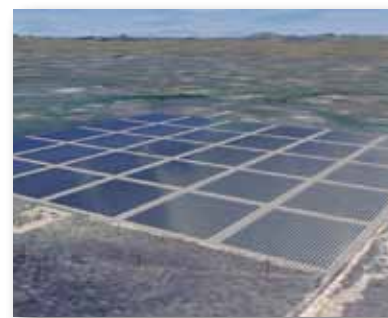


### BIOMASS

- Wood biomass plant under construction in Texas
- Coal-to-biomass conversions planned; new plants being evaluated
- Extensive research into coal-biomass co-firing

### SOLAR

- Partnering with Ted Turner on a solar plant in New Mexico
- Solar PV demonstration and research projects in Alabama and Georgia
  - Georgia Power subsidiary nearly doubling solar power availability



### WIND

- Major offshore wind feasibility study conducted with Georgia Tech
- Seeking leases for meteorological towers off Georgia coast
- Data-gathering tests in progress in Alabama, Florida and Georgia

### GREEN ENERGY

- Growing array of renewable energy offerings to customers
- Options include power from landfill methane, biomass and solar
  - Landfill gas-to-electricity plant operating in Florida



### HYDRO

- 34 hydro facilities in Alabama and Georgia
- Ranked 7th among U.S. utilities in hydro capacity
- 16 megawatts incremental capacity increase planned

## Renewable Energy Highlights

- Wholesale subsidiary Southern Power has begun construction of a 100-megawatt (MW) biomass plant in Sacul, Texas, that will be one of the largest in the country.
- Southern Company is partnering with Turner Renewable Energy on a 30-MW solar photovoltaic (PV) power plant in Cimarron, New Mexico.
- Subsidiary Gulf Power owns and operates a 3,200-kilowatt landfill gas-to-electricity plant in Escambia County, Florida, that produces enough power to serve 900 homes.
- Subsidiary Georgia Power plans to convert a unit at Plant Mitchell, a coal-based power plant near Albany, Georgia, to biomass, pending resolution of regulatory uncertainties.
- Southern Company operating subsidiaries are evaluating opportunities to convert existing fossil units to biomass over the next decade. Decisions on individual projects will depend on costs, regulatory/legislative requirements, biomass fuel availability and other site-specific factors.
- Southern Company is conducting research at several plants into co-firing coal with wood chips, wood pellets, sawdust, urban wood waste, peanut hulls, switchgrass and other biomass to determine the costs and impacts of the process.
- Subsidiary Alabama Power has been co-firing biomass grass fuel materials with coal for nine years as part of normal operations at its Plant Gadsden, and co-milling wood in various forms (including chips and sawdust) for eight years.
- Southern Company and Georgia Tech partnered on an extensive study of offshore wind potential in the Southeast, identifying and detailing several key challenges that must be addressed.
- Southern Company is preparing applications for federal leases to construct meteorological towers off the Georgia coast to collect data for assessing the potential for offshore wind generation.
- A wind turbine designed by University of Alabama at Birmingham students has been erected atop the Alabama Power headquarters building to collect research data; wind data also is being collected at Navarre Beach, Florida, and in north Georgia.
- Alabama Power and the Electric Power Research Institute (EPRI) are conducting a demonstration of four different solar PV technologies with microinverters at the Alabama Power headquarters.
- Georgia Power is conducting a demonstration of seven different solar PV technologies at its headquarters building.
- Southern Company subsidiaries, both individually and in partnerships, are offering customers a growing amount of renewable energy options, which may be purchased in “blocks” of green energy from qualified sources.
- Georgia Power has received regulatory approval to nearly double – to 5.4 MW – the amount of solar energy it purchases to supply its Green Energy Program.
- Georgia Power has received regulatory approval to build a 1-MW portfolio of medium-scale solar demonstration projects across the state.
- A partnership with The Westervelt Company will provide 7.5 MW of renewable energy from wood byproducts that Alabama Power will use to further diversify its mix of electricity fuel sources.
- Southern Company is one of the nation’s largest generators of hydroelectric power, with a combined generating capacity of 2,758 MW. Sixteen MW of new hydro capacity planned for the next five years, and other incremental opportunities are being evaluated.